

## Disposal of Uncontaminated Waste

### Standard Operating Procedure

Issue Date: 09/25/18

Revision Date: 08/16/23

The following procedure describes the packaging of uncontaminated waste for custodial pick-up

### What to place in a Cardboard Box

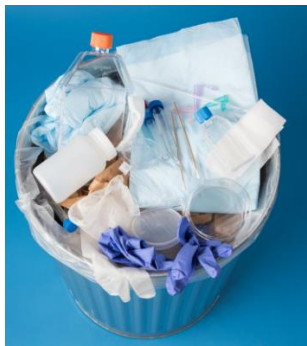
Uncontaminated glass (broken and intact) and pipettes (glass or plastic) must be placed in a cardboard box



- Glass material
- Broken or cracked plastic material
- Serological pipettes
- Petri dishes
- Culture flasks
- Slides
- Bottles (triple rinsed with defaced label)

### What to Place in Normal Trash

All other uncontaminated waste may be placed in trash receptacle.



- Intact plastic material
- Gloves
- Pipette tips
- Syringes without needles
- Paper items to be sent to the landfill

### Procedure: Disposing of Uncontaminated Waste that May Puncture the Skin or Trash Bag

1. Package uncontaminated glass and plastic in a cardboard box.
2. When the box is full, seal it and label it to indicate clearly that it contains uncontaminated glass and plastic.
3. Put the UNCONTAMINATED GLASS AND PLASTICS label on the outside of the container.  
**NOTE:** If you do not have a label, then write on the outside of the box, "Uncontaminated glass and plastic."
4. Does Custodial Services dispose of the box?
  - IF YES, then put the box in the designated area of the lab for collection.
  - If NO, then put the box in the dumpster.